

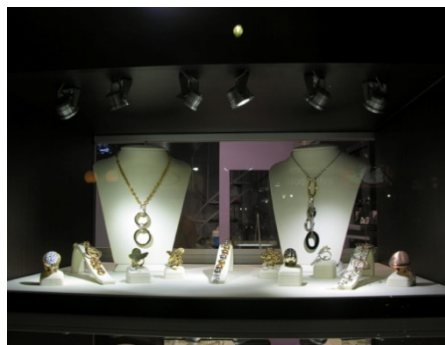
Light Specifications

Technical sheet: L22

Project name:

Project number:

Technical Description: Luxi



Can be used with

- All indicated LEDdrivers
 - Click and Go system
-

Led

New Reference	: KL876102
Old Referece	: L05430
Type	: Surface mounted spot
Angle	: 35°
Input voltage	: 230V
LEDdriver voltage	: 12V 350-700mA
Lifetime	: Min. 50.000 Hours
Dimável	: Yes, with driver dim Lumotech

Module

Size	: Ø35mm x 49mm x 38mm
Material of module	: Anodized Aluminium
Colour	: Aluminium*
Connection	: 1M cable + plug
Extra	: Decorative cable 10cm
Driver	: Included
Protection	: IP20
Energy class	: A+

Colour	Kelvin	Lumen	Watt
Warm White	3000K	150Lm	2,3W
Natural White	4000K	180Lm	2,3W
Cool White	6000K	210Lm	2,3W

Note: *Available in white or black
Version 12/24V AC/DC available
LED spot with support

Supplier

Chainlight Lighting Systems
Rua Fernão Vilarinho lote 15 BI B, loja 6
8600-315 Lagos - Portugal

Tel: +351 282778128
www.chainlight.pt E-mail: info@chainlight.eu