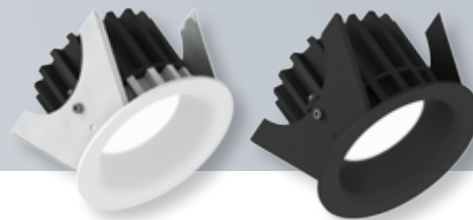


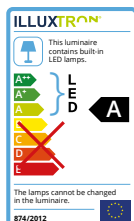


Ø 90 mm

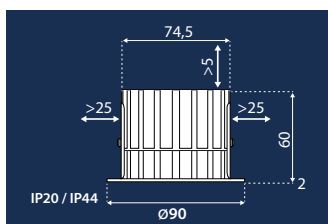


Specifications

	LINEA 75 FIXED
Colour White = MW	Matte White RAL 9016
Colour Black = BL	Matte Black RAL 9005
Beam Angle	60°
Fixture Material	Diecast Aluminium
Environment/Applications	Indoor, cove lighting
IP Rate	IP20 / IP44
IK Rate	IK02
Operating Temperature	-20°C / +45°C
Safety Marks	EN60598 / EN62031 / EN62471
EMC Compliance	EN55015
Expected Lifespan (at 25°C - L70/B10)	See the expected lifetime table
Warranty	7 Years



Dimensions



IP20 / IP44:

Only when the luminaire is installed in a closed ceiling it may be exposed to splash water from the front side (IP44).

Expected Lifespan Data

Tested Luminaire	LM80 Test Tj 55°C Expected Lifespan	LM80 Test Tj 85°C Expected Lifespan	LM80 Test Tj 105°C Expected Lifespan	Linea 75 Measured Tj LED	Linea 75 Expected Lifespan
Linea 75 HV-IC-600 Lm	>50.000 Hrs	>50.000 Hrs	>15.000 Hrs	59°C	>50.000 Hrs
Linea 75 HV-IC-900 Lm	>50.000 Hrs	>50.000 Hrs	>15.000 Hrs	74°C	>50.000 Hrs
Linea 75 LV	>70.000 Hrs	>70.000 Hrs	>60.000 Hrs	75°C	>70.000 Hrs
Linea 75 LV/RGB	>70.000 Hrs	>70.000 Hrs	>60.000 Hrs	75°C	>70.000 Hrs
Linea 75 MLM / MLMC at 700mA	>70.000 Hrs	>70.000 Hrs	>60.000 Hrs	94°C	>60.000 Hrs

• Lifespan testing is conducted in a closed ceiling without insulation material• Expected Lifespan (at 25°C - L70/B10)

Photometrics

Area	Distance cm	Diameter cm	Surface m²	Illuminance (Lx)				
				600 Lm	900 Lm	1000 Lm	1250 Lm	1500 Lm
A	100	115	1.05	710	1070	1190	1480	1780
B	200	231	4.19	180	270	300	370	450
C	300	346	9.42	80	120	130	170	200

Note: the illuminance data above is intended for indicational purpose only and does not consider any influencing environmental factors